

# Quarterly Post-Release Community and Mandatory Supervision Update

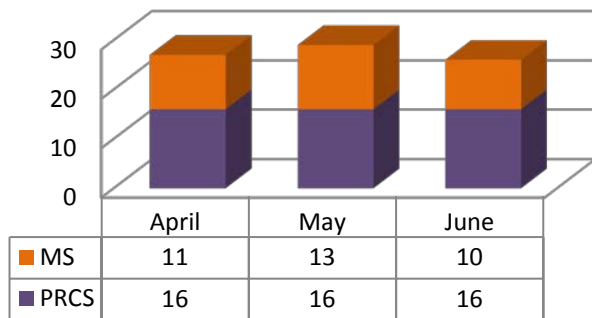
## April – June 2014: 82 New Supervisees

\*since realignment began in October 2011, there have been nine hundred seventy-four (974) supervisees

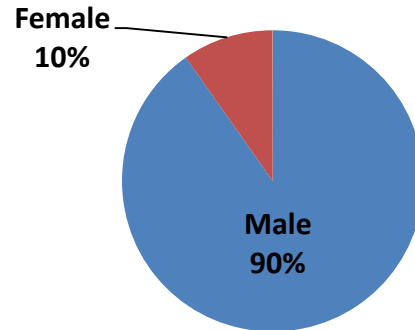
### FY 2013-14 Fourth Quarter Highlights and Year-to-Date (YTD) totals:

- 82 new supervisees (YTD: 304)
- PRCS supervisees outnumbered MS supervisees
- 32% of supervisees live out of county (YTD: 33%)
- 51 revocations were filed (YTD: 203)
- 14% of violations were property crimes (YTD: 20%)
- 54% of terminations were successful (YTD: 59%)

### PRCS and MS Released to SMC Supervision



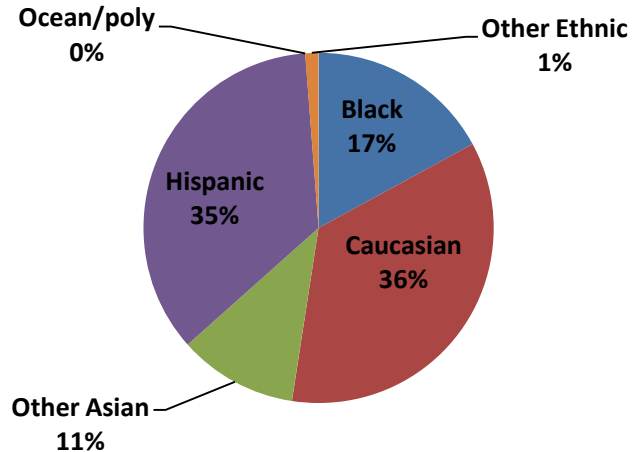
### Gender



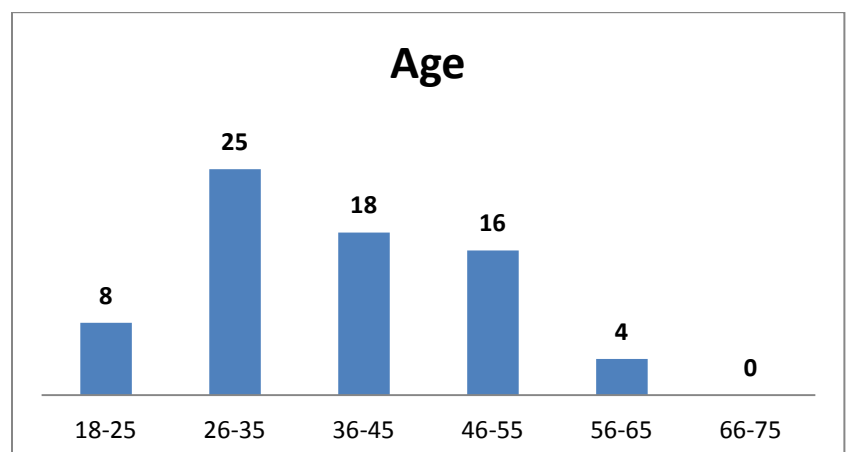
City of Residence	# of Supervisees
Redwood City	9
Daly City	6
San Mateo	6
East Palo Alto	5
Menlo Park	4
S. San Francisco	4
Pacifica	2
Burlingame	1
Emerald Hills	1
Half Moon Bay	1
Millbrae	1
Pescadero	1
San Bruno	1
San Carlos	1
Transient	13
<b>Out of County</b>	<b>26</b>

Out of County	# of Supervisees
Santa Clara County	9
San Francisco County	8
Alameda County	5
Other County in State	4

### Race



### Age



## Terminations, Revocations and Flashes

There were forty-six (46) terminations during the reporting period. Over half of them at fifty-four percent (54%) were successful.

Total # of Supervisees Successfully Terminated		Total # of Supervisees Unsuccessfully Terminated	
<b>PRCS – 19</b> • Early Terminations: 4 • Normal Terminations:15	<b>MS – 6</b> • Normal Termination: 6	<b>PRCS – 5</b>	<b>MS – 16</b>

In the reporting period, we filed a total of fifty-one (51) revocations. Of those, twenty-nine (29) were PRCS revocations and twenty-two (22) were MS revocations. The breakdown by violation category is below:

Violation Type	PRCS	MS	Percent of Violations
Property	4	3	14%
Drug/Alcohol	6	8	27%
Crimes Against Persons	7	0	14%
Technical	7	10	33%
Other Crimes	5	1	12%
<b>TOTAL</b>	<b>29</b>	<b>22</b>	<b>100%</b>

Generally, the population is reoffending by committing crimes similar to those for which they are on Realignment, namely non-serious, non-violent, non-serious sex related crimes.

More than half of revocations filed, a combined 55%, were for new law violations involving crimes against persons, property and drug/alcohol related crimes. The percentage of revocations filed (33%) for technical violations, a decline when compared to the previous quarter. Technical violations of supervision are filed when supervisees absconde or fail to abstain from substance use. A very small percentage involves other crimes such as robbery, battery, criminal threats and/or evading a peace officer.

There were twenty-seven (27) flashes during this reporting period.

## AB109 In-Custody Monthly–April 2014

\*revision

### PC 1170(h): 20 cases

	This Month (Apr 2014)	Year Ago (Apr 2013)	Last Month (Mar 2014)	This Year Total (Oct '13-Sep '14)	2nd Year Total (Oct '12-Sep '13)	1st Year Total (Oct '11-Sep '12)
Number of sentenced cases	20	31	20	192	350	220
Total days to be served	4,678	5,774	4,321	37,204	57,645	34,773
Non-PC1170 total days to be served	6,029	7,857	7,064	52,974	108,014	65,649*
Percent increase in sentenced days due to PC1170	78%	73%	61%	70%	53%	53%*

\* Figures marked by asterisk do not include days served by self-surrenders entering custody

20 inmates (16 men, 4 women) were sentenced to the County jail under PC 1170(h) during April. After credits, these inmates are expected to serve a total of 4,678 days, or on average 234 days each. 10 (50%) of these inmates have split sentences, 7 were men and 3 were women.

For comparison, 163 persons (including self-surrenders) were sentenced to terms in the San Mateo County jail exclusive of the PC 1170(h) cases. After credits, these inmates are expected to serve a total of 6,029 days, or on average 37 days each.

**Mandatory Supervision Revocations:** In April, 6 mandatory supervisees were revoked (3 revoked/reinstated, 3 revoked/terminated). They are expected to serve a total of 188 days, or an average of 31 days each. (These numbers are not reflected in the above 1170(h) table.)

### Post-Release Community Supervision: 29 cases

There were 29 new local PRCS bookings in April: 14 inmates were booked on a new flash incarceration (PC3454) and served a total of 104 days or 7.5 days on average; 15 inmates were booked on a local PRCS revocation (PC3455). During the month of April cumulatively a total of 62 inmates spent time in custody on PRCS charges.

### Parole Revocation: 6 cases

There were 6 parole revocation hearings in April. 6 inmates were given revocation sentences and are expected to serve a total of 286 revocation days in custody, or on average 48 days each. The cumulative total of revocation hearings since October 2013 is 37 cases which are expected to serve a total of 1,570 days.

As of July 1, 2013, responsibility for the adjudication of parole violations moved from the Board of Parole to the courts. As a result, Parole will defer to the DA if the defendant has an on-view case and a 3056 hold by dropping their hold. \*\*Since this change became effective there has been a decrease in the Parole revocation sentences and hearings.

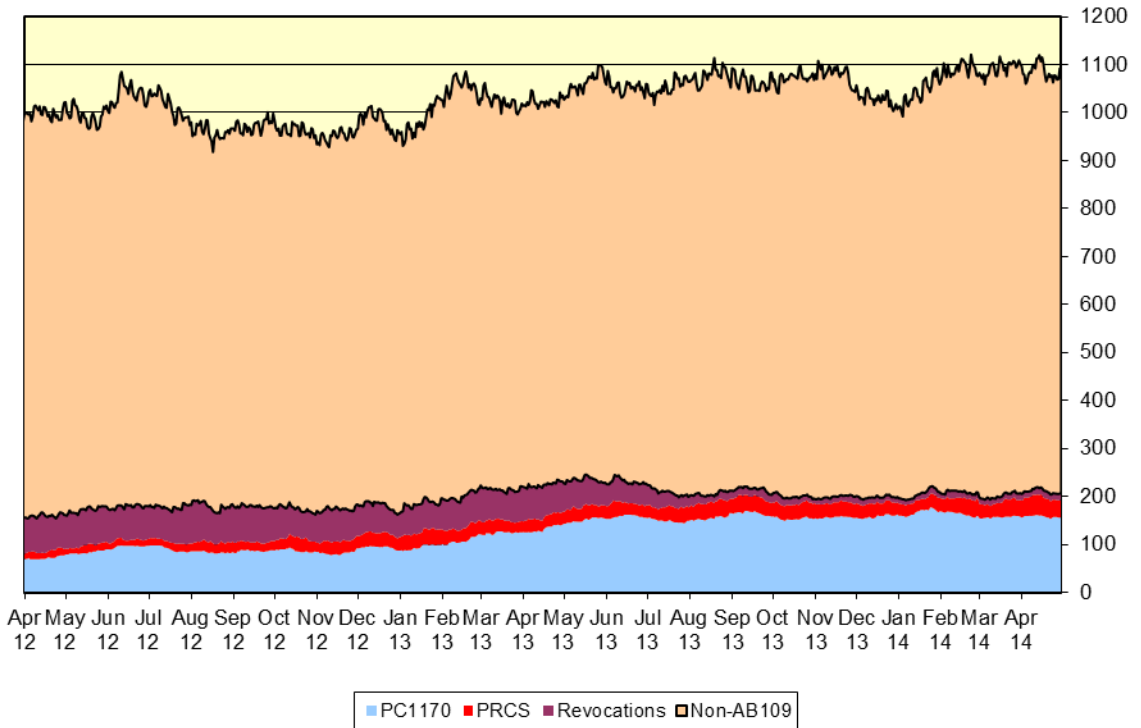
### AB109 Totals

AB109 Stats	Current Year (Oct '13-Sep '14)				Prior Year (Oct '12-Sep '13)	
	Cases Since 10/1/13	Days in Custody	In Custody 4/30/14	% of Population 4/30/14	No. of Cases	Days in Custody
PC1170(h)	192	37,204	158	14.5%	350	57,645
PC3056 revocations	37	1,570	15	1.4%	429	12,701
PRCS	167	6,706	35	3.2%	295	10,587
<b>Total AB109</b>	<b>396</b>	<b>45,480</b>	<b>208</b>	<b>19.1%</b>	<b>1,074</b>	<b>80,933</b>

### AB109 Grand Totals Since October 2011

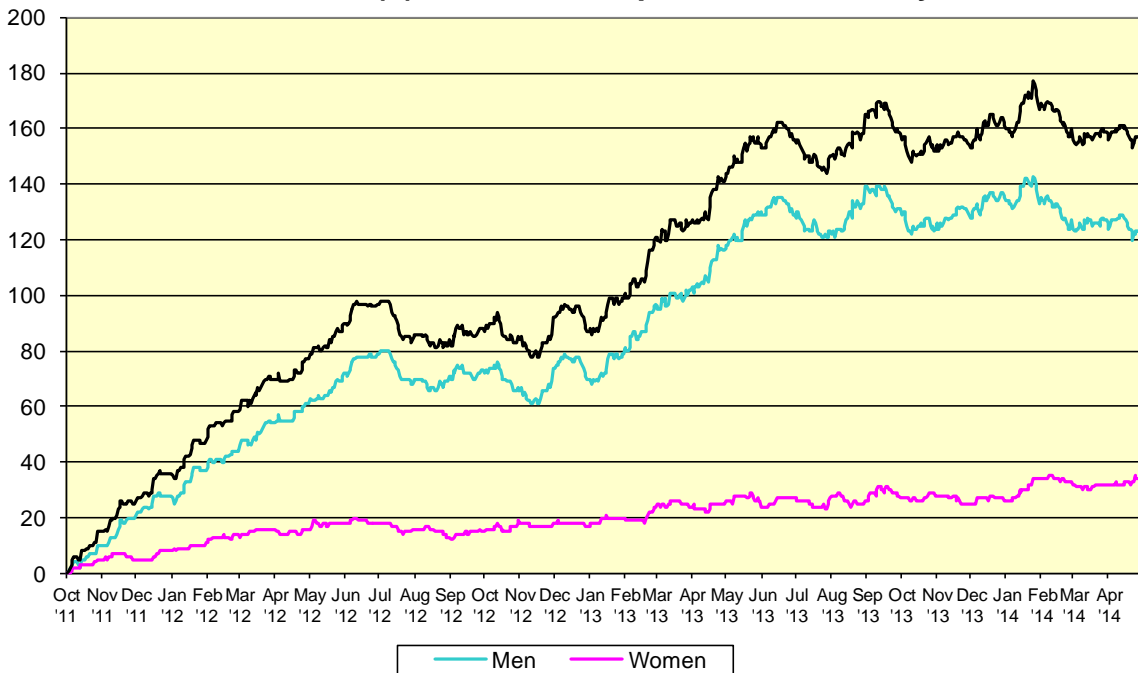
	No. of Cases	Days in Custody	Avg. Length of Stay
PC1170(h)	762	129,622	170 days
PC3056 revocations	1,059	34,860	33 days
PRCS	650	21,577	33 days
<b>Total AB109</b>	<b>2,471</b>	<b>186,059</b>	<b>75 days</b>

### AB109 Inmates--Population in Custody



The above chart shows the daily in-custody population (MCF+WCC+MTF+WTF) and what portion is due to AB109 inmates.

### PC1170(h) Sentenced Population In Custody



The above chart shows the trending for the PC1170(h) population since October 2011.

## AB109 In-Custody Monthly–May 2014

### PC 1170(h): 25 cases

	This Month (May 2014)	Year Ago (May 2013)	Last Month (Apr 2014)	This Year Total (Oct '13-Sep '14)	2nd Year Total (Oct '12-Sep '13)	1st Year Total (Oct '11-Sep '12)
Number of sentenced cases	25	42	20	217	350	220
Total days to be served	4,904	6,838	4,678	42,108	57,645	34,773
Non-PC1170 total days to be served	7,881	9,958	6,029	60,855	108,014	65,649*
Percent increase in sentenced days due to PC1170	62%	69%	78%	69%	53%	53%*

*\* Figures marked by asterisk do not include days served by self-surrenders entering custody*

25 inmates (17 men, 8 women) were sentenced to the County jail under PC 1170(h) during May. After credits, these inmates are expected to serve a total of 4,904 days, or on average 196 days each. 12 (48%) of these inmates have split sentences, 8 were men and 4 were women.

For comparison, 178 persons (including self-surrenders) were sentenced to terms in the San Mateo County jail exclusive of the PC 1170(h) cases. After credits, these inmates are expected to serve a total of 7,881 days, or on average 44 days each.

**Mandatory Supervision Revocations:** In May, 5 mandatory supervisees were revoked (all 5 were revoked/terminated). They are expected to serve a total of 383 days, or an average of 77 days each. (These numbers are not reflected in the above 1170(h) table.)

### Post-Release Community Supervision: 13 cases

There were 13 new local PRCS bookings in May. 10 inmates were booked on a new flash incarceration (PC3454) and served a total of 67 days or 6.7 days on average; 3 inmates were booked on a local PRCS revocation (PC3455). During the month of May cumulatively a total of 48 inmates spent time in custody on PRCS charges.

### Parole Revocation: 15 cases

There were 15 parole revocation hearings in May. 14 inmates were given revocation sentences and are expected to serve a total of 598 revocation days in custody, or on average 43 days each. The cumulative total of revocation hearings since October 2013 is 52 cases which are expected to serve a total of 2,168 days.

As of July 1, 2013, responsibility for the adjudication of parole violations moved from the Board of Parole to the courts. As a result, Parole will defer to the DA if the defendant has an on-view case and a 3056 hold by dropping their hold. \*\*Since this change became effective there has been a decrease in the Parole revocation sentences and hearings.

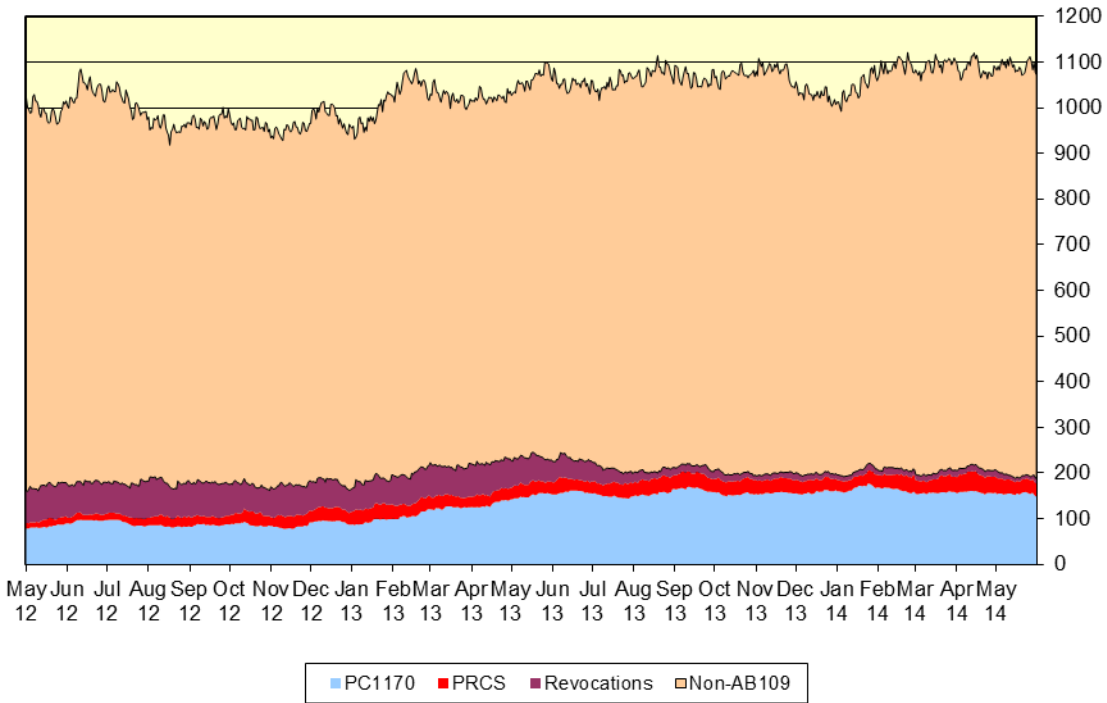
### AB109 Totals

AB109 Stats	Current Year (Oct '13-Sep '14)				Prior Year (Oct '12-Sep '13)	
	Cases Since 10/1/13	Days in Custody	In Custody 5/31/14	% of Population 5/31/14	No. of Cases	Days in Custody
PC1170(h)	217	42,108	149	13.9%	350	57,645
PC3056 revocations	52	2,168	10	0.9%	429	12,701
PRCS	189	7,666	28	2.6%	297	10,587
<b>Total AB109</b>	<b>458</b>	<b>51,942</b>	<b>187</b>	<b>17.5%</b>	<b>1,076</b>	<b>80,933</b>

### AB109 Grand Totals Since October 2011

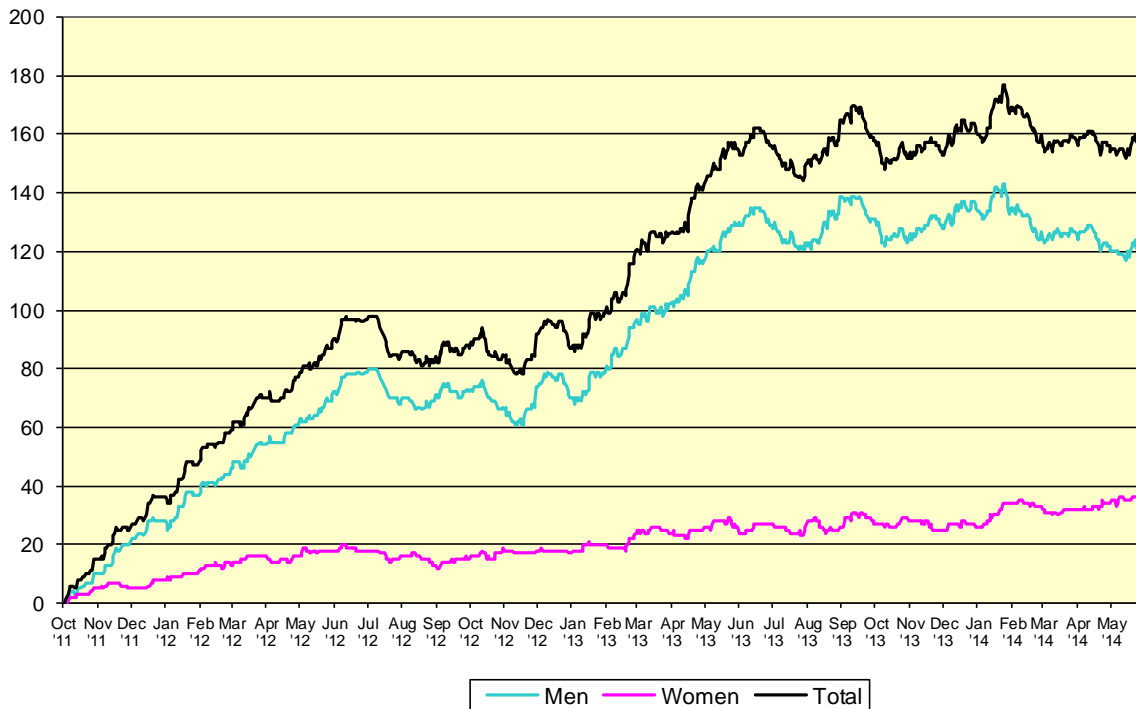
	No. of Cases	Days in Custody	Avg. Length of Stay
PC1170(h)	722	125,098	173 days
PC3056 revocations	1,074	35,458	33 days
PRCS	674	22,537	33 days
MS Revocations	80	3,808	48 days
<b>Total AB109</b>	<b>2,535</b>	<b>192,521</b>	<b>76 days</b>

### AB109 Inmates--Population in Custody



The above chart shows the daily in-custody population (MCF+WCC+MTF+WTF) and what portion is due to AB109 inmates. Mandatory supervisees serving revocation time are represented in the PC1170 population.

### PC1170(h) Sentenced Population In Custody



The above chart shows the trending for the PC1170(h) population since October 2011. (includes mandatory supervision revocations).

## AB109 In-Custody Monthly–June 2014

### PC 1170(h): 21 cases

	This Month (Jun 2014)	Year Ago (Jun 2013)	Last Month (May 2014)	This Year Total (Oct '13-Sep '14)	2nd Year Total (Oct '12-Sep '13)	1st Year Total (Oct '11-Sep '12)
Number of sentenced cases	21	22	25	238	350	220
Total days to be served	3,938	2,931	4,904	46,046	57,645	34,773
Non-PC1170 total days to be served	7,414	8,838	7,881	68,269	108,014	65,649*
Percent increase in sentenced days due to PC1170	53%	33%	62%	67%	53%	53%*

*\* Figures marked by asterisk do not include days served by self-surrenders entering custody*

21 inmates (17 men, 4 women) were sentenced to the County jail under PC 1170(h) during June. After credits, these inmates are expected to serve a total of 3,938 days, or on average 188 days each. 11 (52%) of these inmates have split sentences, 10 were men and 1 was a woman.

For comparison, 169 persons (including self-surrenders) were sentenced to terms in the San Mateo County jail exclusive of the PC 1170(h) cases. After credits, these inmates are expected to serve a total of 7,414 days, or on average 44 days each.

**Mandatory Supervision Revocations:** In June, 4 mandatory supervisees were revoked (All 4 were revoked/terminated). They are expected to serve a total of 606 days, or an average of 152 days each. (These numbers are not reflected in the above 1170(h) table.)

### Post-Release Community Supervision: 25 cases

There were 25 new local PRCS bookings in June. 10 inmates were booked on a new flash incarceration (PC3454) and will serve a total of 90 days in custody or 9 days on average; and 15 inmates were booked on a local PRCS revocation (PC3455). During the month of June cumulatively a total of 53 inmates spent time in custody on PRCS charges.

### Parole Revocation: 8 cases

There were 8 parole revocation hearings in June. 8 inmates were given revocation sentences and are expected to serve a total of 338 revocation days in custody, or on average 42 days each. The cumulative total of revocation hearings since October 2013 is 60 cases which are expected to serve a total of 2,506 days.

As of July 1, 2013, responsibility for the adjudication of parole violations moved from the Board of Parole to the courts. As a result, Parole will defer to the DA if the defendant has an on-view case and a 3056 hold by dropping their hold. \*\*Since this change became effective there has been a decrease in the Parole revocation sentences and hearings.

### AB109 Totals

AB109 Stats	Current Year (Oct '13-Sep '14)				Prior Year (Oct '12-Sep '13)	
	Cases Since 10/1/13	Days in Custody	In Custody 6/30/14	% of Population 6/30/14	No. of Cases	Days in Custody
PC1170(h)	238	46,046	145	13.4%	350	57,645
PC3056 revocations	60	2,506	14	1.3%	429	12,701
PRCS	205	8,645	32	3.0%	295	10,587
<b>Total AB109</b>	<b>503</b>	<b>57,197</b>	<b>191</b>	<b>17.7%</b>	<b>1,074</b>	<b>80,933</b>

### AB109 Grand Totals Since October 2011

	No. of Cases	Days in Custody	Avg. Length of Stay
PC1170(h)	808	138,464	171 days
PC3056 revocations	1,082	35,796	33 days
PRCS	688	23,516	34 days
<b>Total AB109</b>	<b>2,578</b>	<b>197,776</b>	<b>77 days</b>

UNCLASSIFIED



# San Mateo County Sheriff's Office

## AB109—Public Safety Realignment

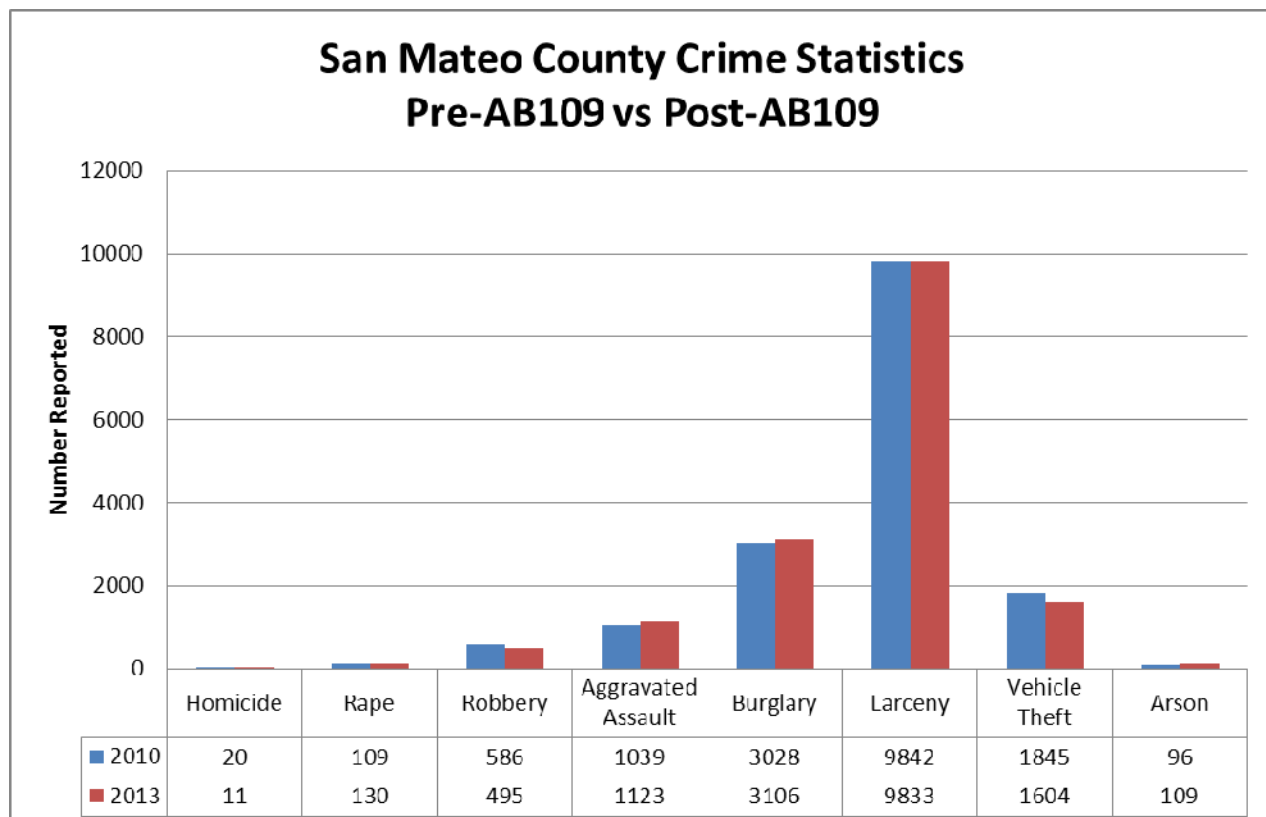


CRIME STATISTICS

OCTOBER 3, 2014

### San Mateo County Crime Statistics Pre & Post Proposition AB109—Public Safety Realignment

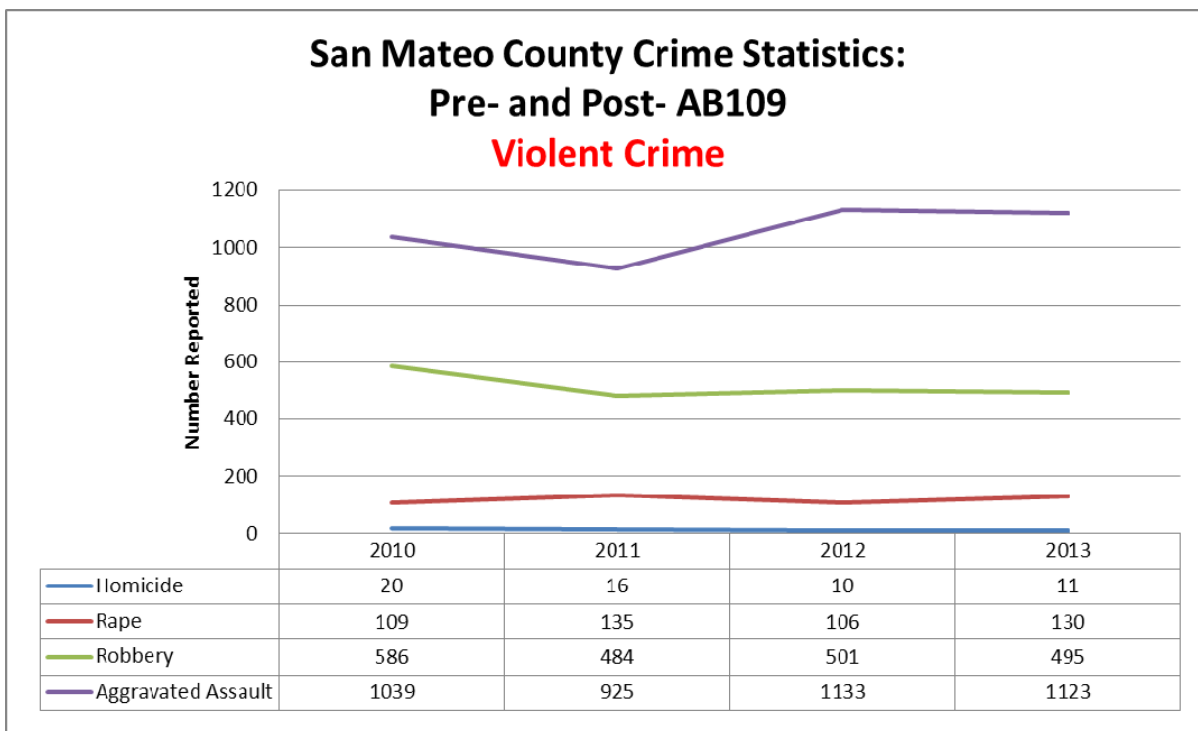
Please find included in this report crime statistics for San Mateo County as a whole, as well as the San Mateo County Sheriff's Office, for the time period of 2010-2013 (pre- and post- proposition AB109). Additional analysis has been provided for 2014, however that only includes San Mateo County Sheriff's Office crime statistics. It is considered incomplete data as it only represents year to date data, January—September 2014. Uniform Crime Reporting (UCR) data obtained from the State of California Department of Justice website (CJSC Statistics: Crimes and Clearances <http://oag.ca.gov/crime/cjsc/stats/crimes-clearances>) was used to conduct this analysis. Additionally, 2014 data for the San Mateo County Sheriff's Office was obtained via the RIMS reports management system (UCR Reports).



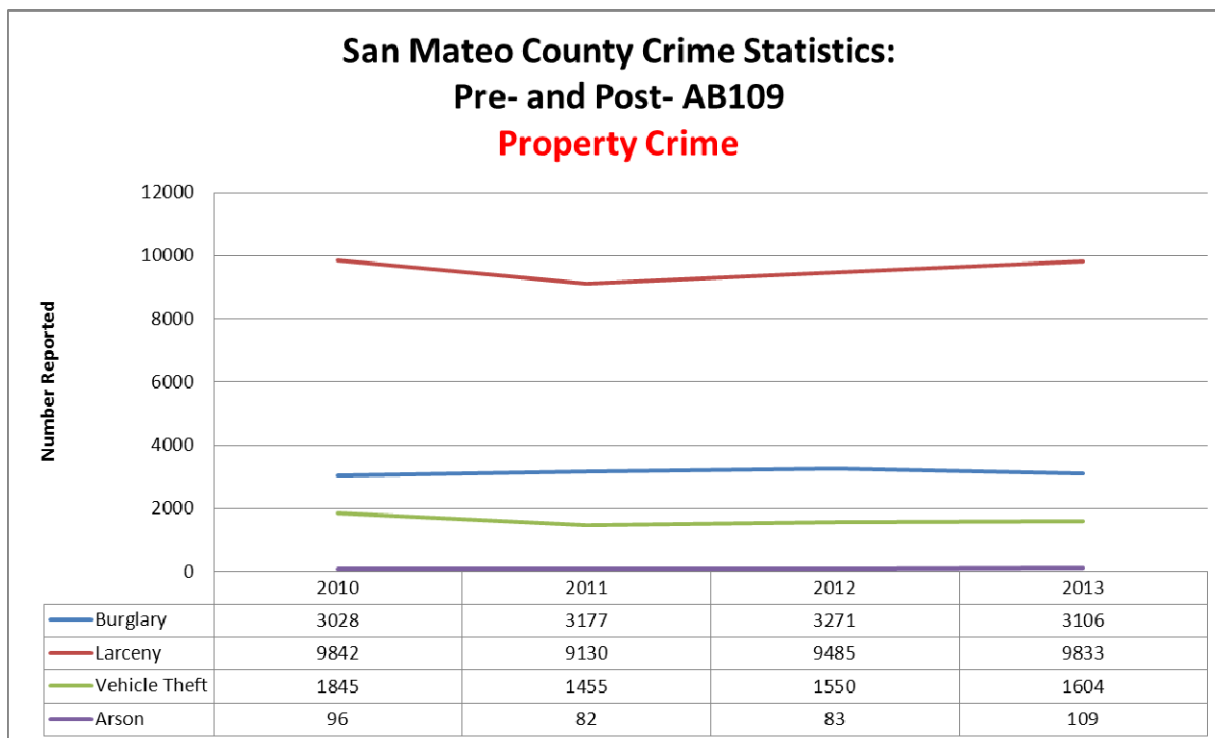
**Figure 1:** The chart above compares all Part I crimes reported in San Mateo County in 2010 and 2013. Proposition AB109 went into effect on October 1, 2011; in order to compare two full years of pre-AB109 crime statistics and post-AB109 it was necessary to look at 2010 and compare to 2013. The year 2012 could have also been used, however the County was still making adjustments to accommodate the new law, therefore the year 2013 was used for comparison instead.



**SAN MATEO COUNTY CRIME STATISTICS:**



*Figure 2: Please refer to page 3*



*Figure 3: Please refer to page 3*

**SAN MATEO COUNTY CRIME STATISTICS:**

**San Mateo County Crime Statistics:  
Pre- and Post- AB109  
Violent Crime**

**Figure 2:** The chart in Figure 2 represents all the violent Part I crimes reported in San Mateo County in 2010-2013. The homicide rate reflects a slight decline; the number of reported rapes increased; the number of reported robberies decreased slightly, and the number of reported aggravated assaults increased.

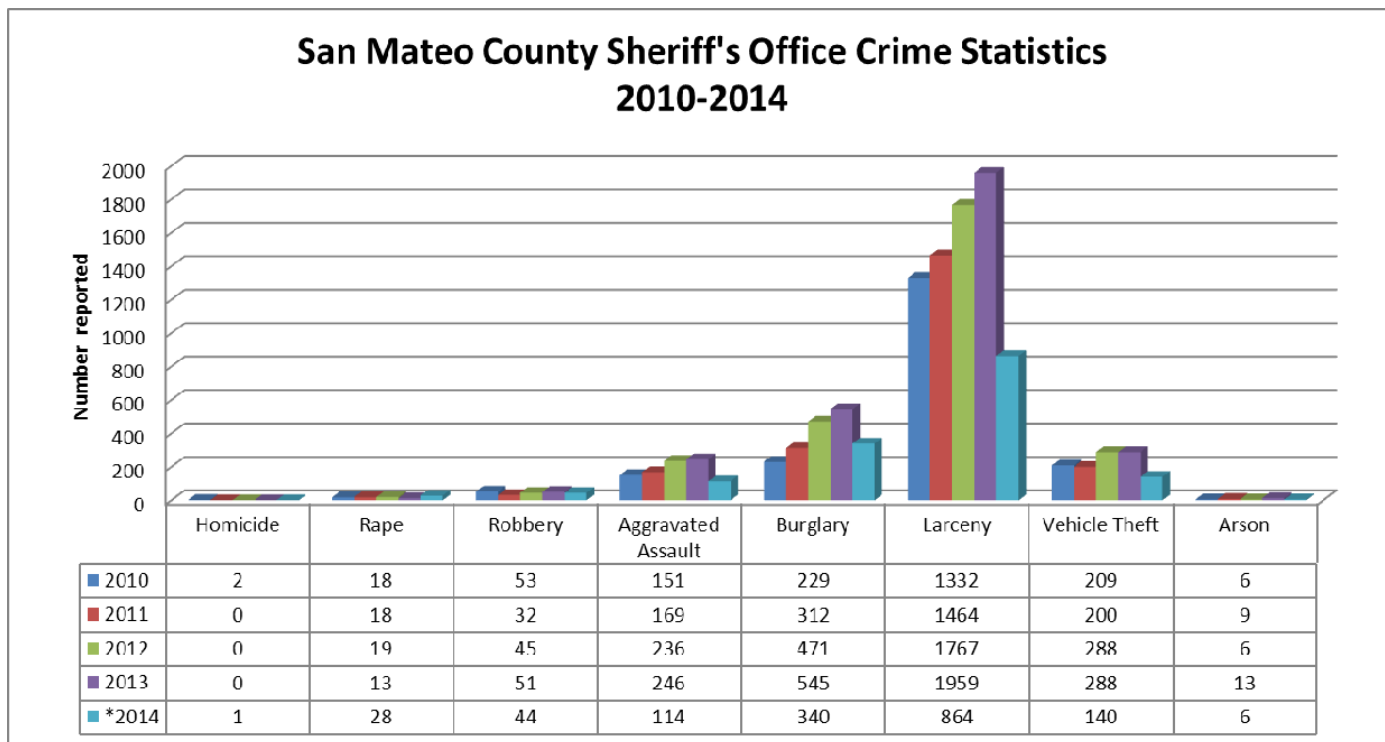
**San Mateo County Crime Statistics:  
Pre- and Post- AB109  
Property Crime**

**Figure 3:** The chart in Figure 3 represents all the property Part I crimes reported in San Mateo County in 2010-2013. The burglary rate reflects a marginal increase; the number of reported larceny incidents decreased slightly; the number of reported vehicle thefts decreased; and the number of reported arsons increased.

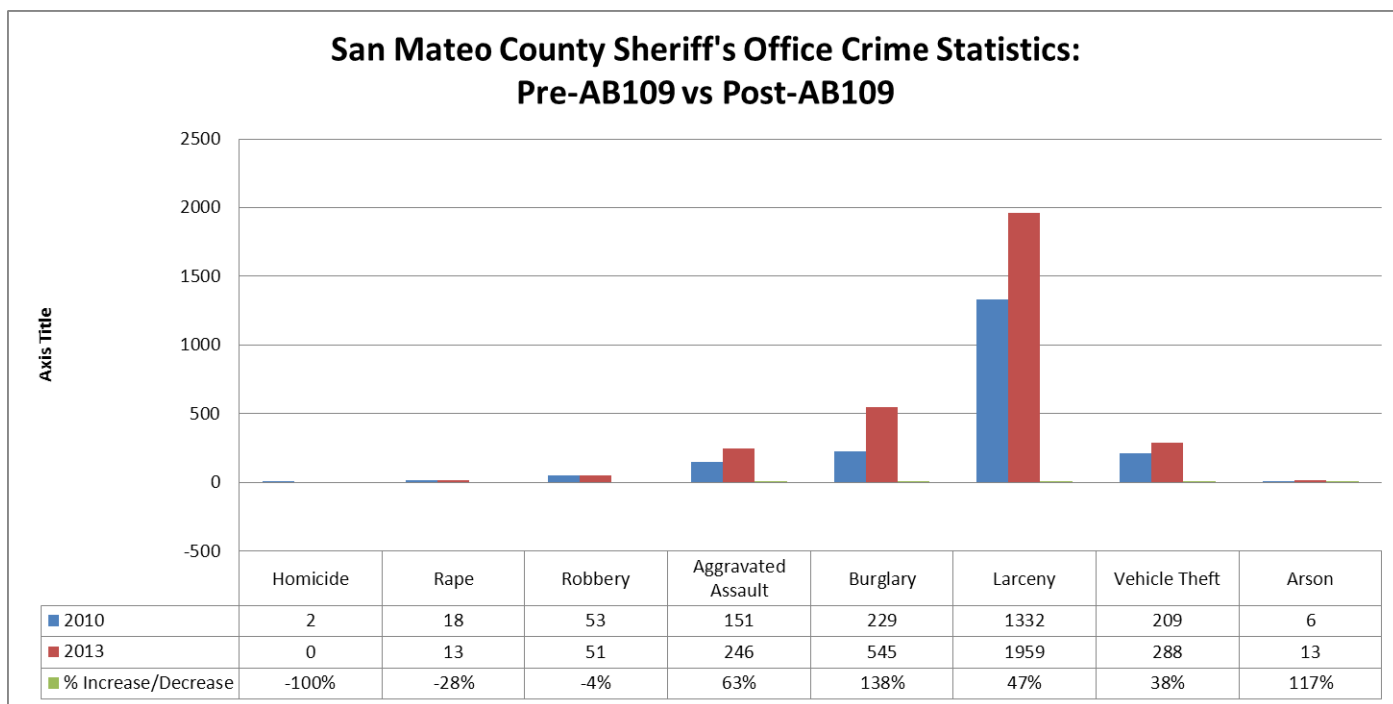
COUNTYWIDE	2010	2011	2012	2013
Homicide	20	16	10	11
Rape	109	135	106	130
Robbery	586	484	501	495
Aggravated Assault	1039	925	1133	1123
Burglary	3028	3177	3271	3106
Larceny	9842	9130	9485	9833
Vehicle Theft	1845	1455	1550	1604
Arson	96	82	83	109

*Figure 4: The table above represents the total number of reported Part I crimes in San Mateo County for 2010 - 2013.*

**SAN MATEO COUNTY SHERIFF'S OFFICE CRIME STATISTICS:**



*Figure 5: Please refer to page 5*



*Figure 6: Please refer to page 5*

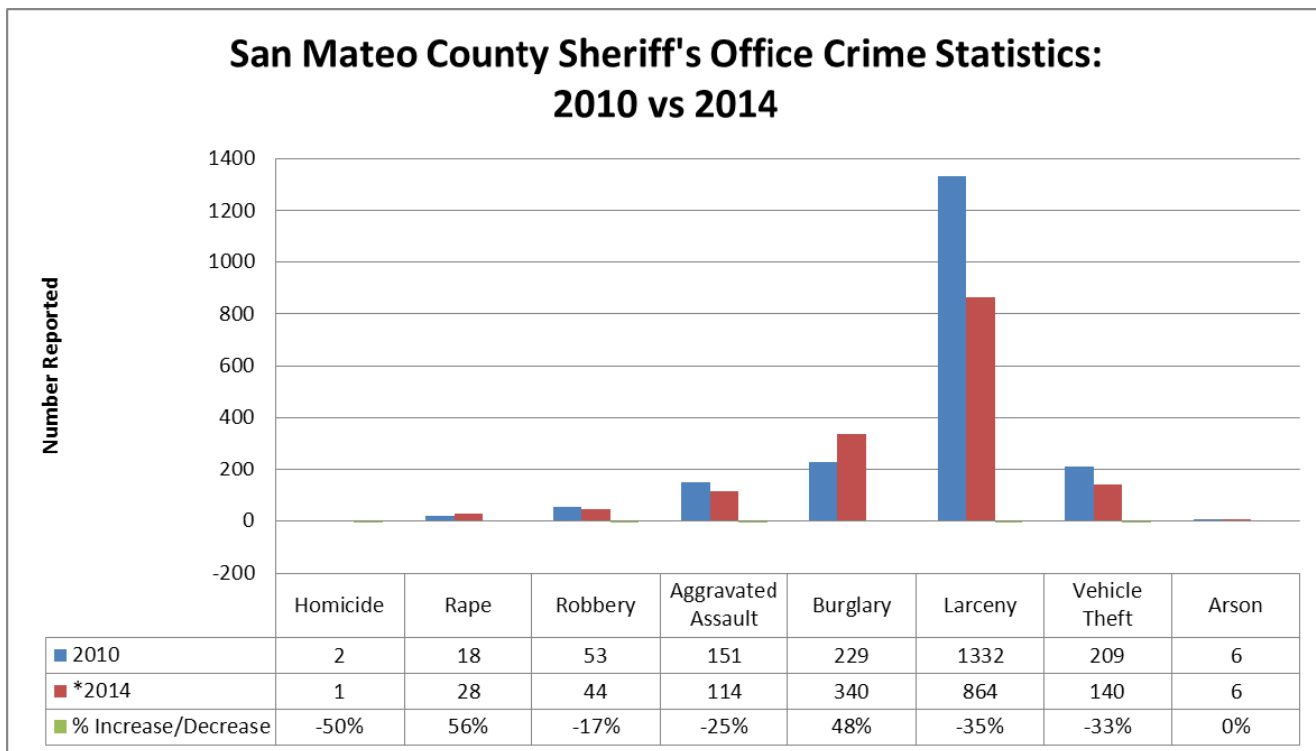
**SAN MATEO COUNTY SHERIFF'S OFFICE CRIME STATISTICS:**

**San Mateo County Sheriff's Office Crime Statistics  
2010-2014**

**Figure 5:** The chart in Figure 5 reflects all the Part I crimes reported to the San Mateo County Sheriff's Office in 2010-2014. This data is only representative of San Mateo County Sheriff's Office jurisdictions, divisions and contract cities. The data for 2010-2013 is complete for those years, however 2014 is incomplete only reflecting year to date data, January—September 2014.

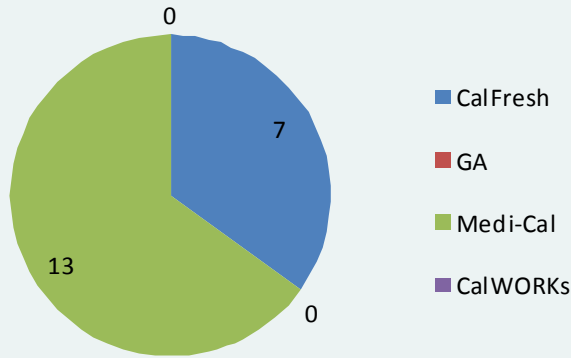
**San Mateo County Sheriff's Office Crime Statistics  
Pre-AB109 vs Post-AB109**

**Figure 6:** The chart in Figure 6 compares all the Part I crimes reported to the San Mateo County Sheriff's Office in 2010 and 2013. Proposition AB109 went into effect on October 1, 2011; in order to compare two full years of pre-AB109 crime statistics and post-AB109 it was necessary to look at 2010 and compare to 2013. The year 2012 could have also been used, however the Sheriff's Office was still making adjustments to accommodate the new law, therefore the year 2013 was used for comparison. **Note: Aside from homicide, rape, and robbery, Figure 6 reflects a consistent increase in reported crime within San Mateo County Sheriff's Office jurisdictions.**

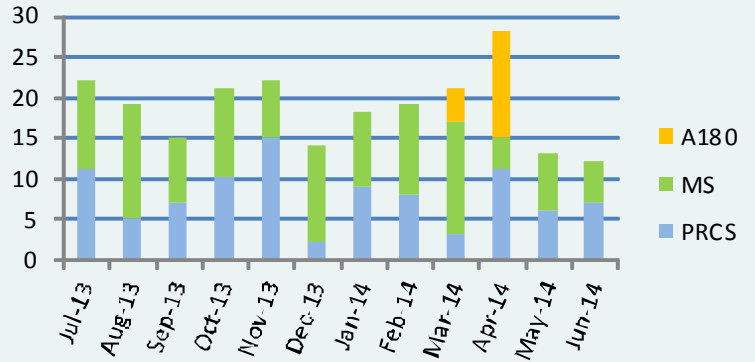


**Figure 7:** The chart above compares all Part I crimes reported to the San Mateo County Sheriff's Office in 2010 and 2014. Although 2014 only reflects partial data (January—September), we can already see an increase in reported rapes and burglaries.

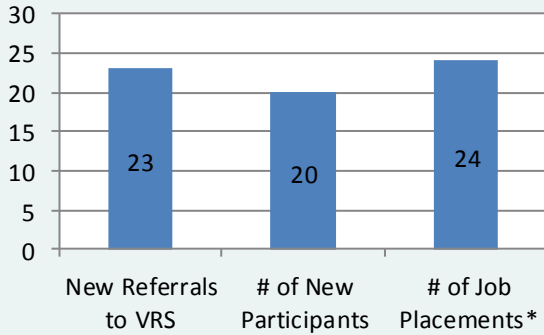
**Benefits Enrolled, FY 13-14, Q4**



**New Intakes, FY 13-14**



**Employment Services- 550 Jobs!**



**Job Placements, FY 13-14, Q4**

13 of 24	Placed in Community Employment
11 of 24	Placed in Offsite Training Programs (SBR, REEP, Caltrans)

\*Job Placements do not necessarily occur during the quarter of referral

**Services Provided to Clients**

FY 13-14, Q4



**152 Motel Vouchers**

**11 Shelter Beds**



**69 Food Gift Cards**

**66 Food Totes**



**255 Monthly Pass**

**662 Single Tickets**



**84 Clothing Vouchers**

**Family Reunification, FY 13-14, Q4**



Family Re-Engagement Events	2
Community Outreach Events	1

**Peer Support/Groups, FY 13-14, Q4**



Support Groups held	18
Total Moral Reconciliation Therapy participants	30*
Total Moral Reconciliation Therapy Graduates	9*

\* Data is cumulative from Oct 2011

## Service Connect Dashboard, FY 13-14, Q4 (April 2014 – June 2014)

### Benefits Enrolled

Service Connect continues to see low enrollment in General Assistance (0) and CalWORKs (0) programs. Many clients are diverted from participating in the General Assistance program and encouraged to take advantage of Service Connect's 550 Jobs! Employment program, as it provides a higher financial benefit, in addition to providing vocational and employment support services. Service Connect has typically had low enrollment in CalWORKs, as those clients are returning home to families may already be connected to the CalWORKs program.

### New Intakes

The transition of former Achieve 180 clients to Service Connect during March and April of this year is reflected in the FY 13-14 New Intakes chart. The decline in new intakes at Service Connect observed at the end of Q4 may be a reflection of Service Connect's relocation to 550 Quarry Road, San Carlos. As we move into FY 14-15, we anticipate that these numbers will stabilize and ultimately increase overall as a result of Unified Reentry.

### Employment Services – 550 Jobs!

HSA continues to see strong rates of job placement for participants in the 550 Jobs! Employment program (the number of job placements can be greater than the number of new referrals during the reporting period, as the job placements reported are not only for those newly referred to the program). During Q4, over half of those gaining employment (54%) have been placed in community employment, in industry areas including trades, retail, food service, janitorial and driving, while 46% of those employed were placed in offsite training programs, including South Bay Recycle (SBR), Reentry Employment Program (REEP), and Caltrans work crews.

### Services Provided to Clients

Emergency housing (motel vouchers) and transportation continue to be high need areas for Service Connect clients, particularly during the transition out of custody. Service Connect clients typically use the maximum allotment of fourteen days in a motel before finding alternate housing. Service Connect designated shelter beds at IVSN's Maple Street Shelter are limited, and clients with certain criminal backgrounds are not able to access these beds.

### Family Reunification

During the fourth quarter, Family Reunification Events included Family Movie Night and an all-ages trip to Rockin' Jump in San Carlos. Also during this quarter, a group of Service Connect clients attended Quest for Democracy Lobby Day on May 19<sup>th</sup> in Sacramento. This event was geared toward increasing supportive legislation for formerly incarcerated individuals and their families. A number of clients participated in advocacy training activities and engaged in legislative visits.

### Peer Support/Groups

During the fourth quarter, Service Connect brought on a Peer Mentor Coordinator and three Peer Mentors (contract) to enhance our capacity for peer-to-peer support. Kenneth Jones, our Peer Mentor Coordinator, brings with him a vast experience working with the reentry community through his work with Project Ninety. New mentors Carolyn Crowley, Cedric Dunn, and Stacey White bring a breadth of experience to their roles providing one-on-one mentorship and support to Service Connect clients.

**REPORT ON AB109 FROM HEALTH SERVICES  
OCTOBER 16, 2014**

What is the flow of inmates at Correctional Health Services?

	<b>FY 14/15 Q1</b>	<b>YTD</b>
<b>Clients Referred to CHS</b>	99	
<b>MH Needs Assessment</b>	79	
<b>AOD Needs Assessment</b>	79	
<b>Assessed Clients Referred to Service Connect</b>	79	
<b>Assessed Clients Accepting Referrals for MH Issues</b>	27	
<b>Assessed Clients Accepting Referrals for AOD Issues</b>	17	
<b>Medical Referrals</b>	61	
<b>Referrals to Other Services</b>	94	

What is the flow of clients at Service Connect?

	<b>FY 14/15 Q1</b>	<b>YTD</b>
<b>New Clients*</b>	43	43
<b>BHRS Screen</b>	98%	98%
<b>Medical Screening</b>	100%	100%
<b>Formal AOD Assessment</b>	37%	37%
<b>Formal MH Assessment</b>	33%	33%
<b>AOD Referral</b>	84%	84%

\*Admitted clients who agreed to receive assessment services

What medical services are provided to Service Connect clients by SMMC?

	<b>Number of Services FY 13/14 Q4 (N = 74)</b>	<b>Percent</b>	<b>YTD</b>	<b>Percent</b>
<b>SMMC 39<sup>th</sup> Ave Clinics</b>	101	46%		
<b>SMMC (Other/Specialty)</b>	37	17%		
<b>Mobile Health Van</b>	17	8%		
<b>Daly City Health Center</b>	12	5%		
<b>Fair Oaks Health Center</b>	14	6%		
<b>SSF Health Center</b>	3	1%		
<b>Emergency Department</b>	34	15%		
<b>PES</b>	3	1%		
<b>Total</b>	221	100%		

How many clients admitted to Service Connect are served by BHRS?

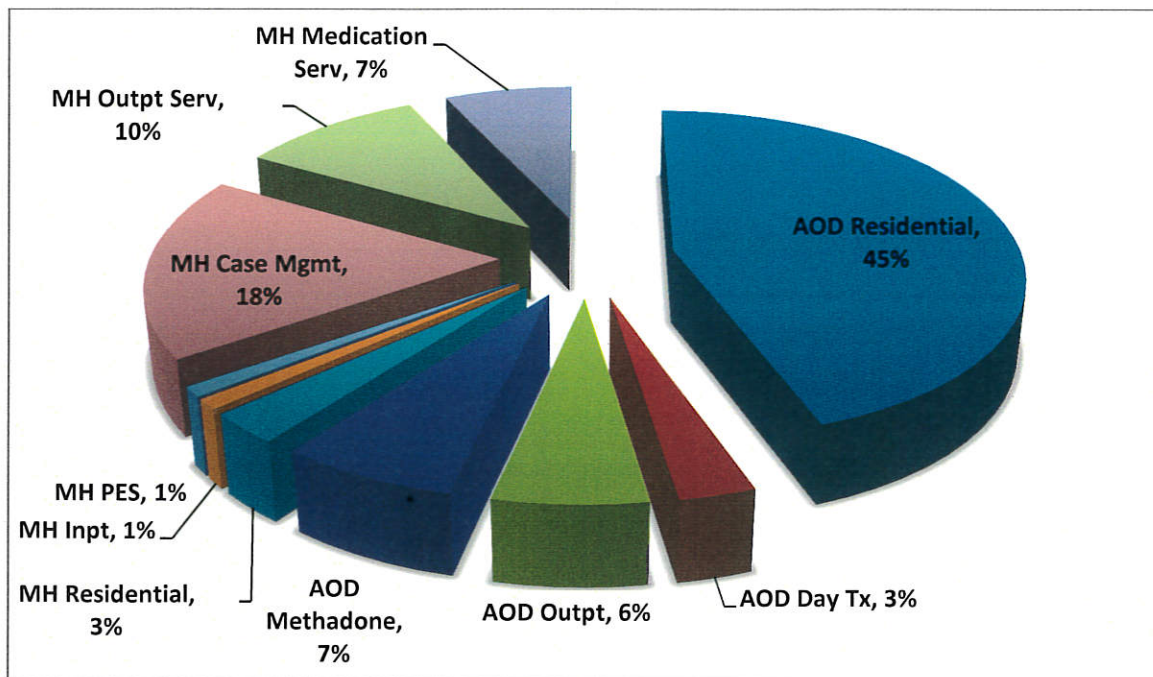
Year Admitted to Service Connect	Service Connect Team	Other AOD Services	Other MH Services	Total Served by BHRS
<b>Total Since 10/11 (N = 835)</b>	304	210	152	388
<b>FY 14/15 Q1 (N = 147)</b>	89	40	30	105
<b>FY 13/14 (N = 362)</b>	167	89	58	185
<b>FY 12/13 (N = 287)</b>	92	81	48	132
<b>FY 11/12 (N = 120)</b>	50	34	34	66

How many services are Service Connect clients receiving through BHRS?

Year Admitted to Service Connect		Service Connect Team	Other AOD Services	Other MH Services	Total Services	Percent Engaged ( $\geq 4$ Serv.)
<b>Overall (N = 835)</b>	<b>Number</b>	2,346	14,913	6,820	24,092	75%
	<b>Average</b>	7.7	71	44.9	62.1	
<b>FY 14/15 Q1 (N = 147)</b>	<b>Number</b>	439	1,151	203	1,793	66%
	<b>Average</b>	4.9	13.5	5	17.1	
<b>FY 13/14 (N = 362)</b>	<b>Number</b>	1,143	7,186	2,222	10,504	70%
	<b>Average</b>	6.8	80.7	38.3	57	
<b>FY 12/13 (N = 287)</b>	<b>Number</b>	945	4,354	1,700	7,179	80%
	<b>Average</b>	10.3	56	35.4	54.4	
<b>FY 11/12 (N = 120)</b>	<b>Number</b>	405	2,380	2,636	5,421	78%
	<b>Average</b>	8.1	68	77.5	82.1	



**What behavioral health services are provided to Service Connect clients by BHRS?**



**What are the outcomes of services provided to Service Connect clients?**

	Successful Completion of AOD Tx*	Visits to PES	Inpatient Days
<b>FY 14/15 Q1 (N = 31)</b>	59%	9 (.3%)	5 (.2%)
<b>FY 13/14 (N = 193)</b>	64%	45 (.3%)	91 (.7%)
<b>FY 12/13 (N = 124)</b>	NA	49 (.7%)	16 (.2%)
<b>FY 11/12 (N = 119)</b>	NA	45 (4%)	15 (1%)

\*Based on 3 consecutive negative urine screens and achievement of treatment goals

**Recommended Outcome Measures**

**Impact on San Mateo County Adult Correctional Facilities**

***1170(h) population***

# of inmates sentenced under Penal Code 1170(h)(5)(a) to San Mateo County jail per month  
# of days to be served by inmates sentenced under PC1170(h)(5)(a) to San Mateo County jail after credits applied

# of inmates sentenced under Penal Code 1170(h)(5)(b) to San Mateo County jail  
# of days to be served by inmates sentenced under Penal Code 1170(h)(5)(b) to San Mateo County jail after credits applied

***Comparison Group***

# of inmates sentenced/self-surrendered that are non-1170(h) per month  
# of days to be served by inmates not sentenced under 1170(h)

***PRCS population***

# of bookings for PRCS flash incarcerations  
# of local bookings for PRCS revocations  
# of days in custody for PRCS flash incarcerations  
# of days in custody for PRCS revocations

***Mandatory Supervision***

# of local bookings for MS revocations  
# of days in custody for MS revocations

***Parole population***

# of parole violators sentenced  
# of days sentenced

**Correctional Health Services (CHS) Reentry Services Received by 1170(h) Population While Incarcerated**

#/% of inmates receiving comprehensive needs assessment by a CHS reentry clinician  
#/% of the comprehensive needs assessments completed by a CHS reentry clinician that were reviewed by a multi-disciplinary team

**Rehabilitative services received by PRCS and Mandatory Supervisee population post-incarceration**

HSA Measure - # / % of supervisees referred to the 550Jobs! program who become participants of the program

HSA Measure - # / % of those who have participated in the 550Jobs! program who secure employment\*

HSA Measure - # / % of people connected to benefits, namely health benefits

HSA Measure - # / % of supervisees connected with a community mentor and/or support groups

HSA Measure - The average # of services provided by HSA to clients seen by the HSA team at Service Connect

HSA/BHRS Joint Measure - # / % of those that begin Moral Reconciliation Therapy<sup>i</sup> who graduate from the program

BHRS Measure - # / % of supervisees receiving mental health and alcohol and other drug assessments after release

BHRS Measure - # / % of supervisees enrolled in mental health services completing 4 or more contacts

BHRS Measure - # / % of supervisees who enter and complete AOD programs

BHRS Measure - The average # of services provided by BHRS to clients seen by the BHRS team at Service Connect

**Impact of PRCS and Mandatory Supervision supervisees in the community**

# / % of supervisees who successfully complete supervision

# / % of supervisees who unsuccessfully complete supervision

# / % of supervisees who violate a condition of their supervision by committing a new crime

Breakdown (# / %) of new crimes by supervisees broken down by crimes against persons, property, and drug/alcohol (possession/sale)

---

<sup>i</sup> Moral Reconciliation Therapy (MRT) is an evidence-based group treatment targeting criminogenic thoughts, beliefs, and values to reduce recidivism.

\*change in wording

Here is the definition the Sheriff, District Attorney, and Probation are putting forth:

**Recidivism Definition by Sheriff/DA/Probation**

**Arrest and/or Charges Filed within 3years of Last Incarceration in San Mateo County.**

- ***Excludes:***
  - § *PRCS Flash Incarceration / Revocation, 647/849B1 (no charges filed), or Dropped Charges, etc...*
- ***Includes:***
  - § *Warrant Arrests, PTA /Court Sentence, etc...*

FOR IMMEDIATE RELEASE  
SEPTEMBER 25, 2014

CONTACT: Tracie Cone , 916.322.1054  
Tracie.Cone@bscc.ca.gov

## BSCC Committee Releases Recidivism Definition

SACRAMENTO -- A Board of State and Community Corrections committee charged with defining the term “recidivism” has approved its final version of the definition, which will be presented for approval to the Board in November.

The committee of public safety officials and subject matter experts has been working since January 2014 to craft the definition mandated by AB 1050, which requires the BSCC to develop definitions to promote statewide consistency in local data collection, evaluation and implementation of evidence-based practices and programs.

It will be the only definition of recidivism prescribed by state statute. The definition reads as follows:

### Adult Recidivism Definition

Recidivism is defined as conviction of a new felony or misdemeanor committed within three years of release from custody or committed within three years of placement on supervision for a previous criminal conviction.<sup>1</sup>

### Supplemental Measures

This definition does not preclude other measures of offender outcomes. Such measures may include new arrest, return to custody, criminal filing, violation of supervision, and level of offense (felony or misdemeanor).

### Recidivism Rates

While the definition adopts a three-year standard measurement period, rates may also be measured over other time intervals such as one, two, or five years.

<sup>1</sup> “Committed” refers to the date of offense, not the date of conviction.

The committee released a draft definition in June, then received public comment for 30 days. The committee’s final version takes those comments into consideration.

The committee continues to work on other definitions as required by the legislation. AB 1050 amended Section 6027 of the Penal Code to require the Board to: “Develop definitions of key terms, including, but not limited to, ‘recidivism,’ ‘average daily population,’ ‘treatment program completion rates,’ and any other terms deemed relevant in order to facilitate consistency in local data collection, evaluation, and implementation of evidence-based practices, promising evidence-based practices, and evidence-based programs.” It is hoped that counties and law enforcement agencies will use the standard definitions for these key terms once all are developed and approved by the BSCC.

Since Public Safety Realignment launched in 2011 California has been investing hundreds of millions of dollars at the local level so that low-level, non-violent offenders and parole violators would serve their terms in county jails, closer to support systems and the rehabilitative programming that officials of the 58 counties determine work best for their communities. A central goal of Realignment is reducing recidivism.

The BSCC is mandated by AB 109 to collect and maintain data about state and community correction policies, practices and needs. Having standard definitions will promote consistent statewide reporting.

###



# SAN MATEO COUNTY COMMUNITY CORRECTIONS PARTNERSHIP

Probation Department  
222 Paul Scannell Drive  
San Mateo, CA 94402  
(650) 312-8816



John L. Maltbie, County Manager  
Adam W. Ely, Deputy County Counsel

## Members

**John Keene, Chair\***  
Chief Probation Officer

**Adrienne Tissier**  
Board of Supervisors

**Steve Wagstaffe\***  
District Attorney

**Becky Arredondo**  
District Attorney's  
Office: Victims  
Representative

**Jean Fraser**  
Health System  
Department

**Iliana Rodriguez\***  
Human Services  
Agency

**Stephen Kaplan**  
Behavioral Health and  
Recovery Services

**John Joy**  
Human Services  
Agency: Employment  
Services

**John C. Fitton\***  
Superior Court

**John Digiacinto\***  
Private Defender

**Susan Manheimer\***  
Chief, San Mateo  
Police Department

**Karen Francone**  
Service League

**Greg Munks\***  
Sheriff

**Anne Campbell**  
County Office of  
Education

\*Executive Committee  
Members

## COMMUNITY CORRECTIONS PARTNERSHIP (CCP) 2015 MEETING SCHEDULE

DATE / TIME 3:00 – 5:00 P.M. (unless otherwise noted)	LOCATION	COMMENTS
Thursday, 01/29/2015	455 County Center Room 101 Redwood City, CA	
Thursday, 04/16/2015	400 County Center Board Chambers Redwood City, CA	
Thursday, 06/25/2015	400 County Center Board Chambers Redwood City, CA	
Thursday, 10/29/2015	400 County Center Board Chambers Redwood City, CA	

MEETINGS ARE ACCESSIBLE TO PEOPLE WITH DISABILITIES. INDIVIDUALS WHO NEED SPECIAL ASSISTANCE OR A DISABILITY-RELATED MODIFICATION OR ACCOMMODATION (INCLUDING AUXILIARY AIDS OR SERVICES) TO PARTICIPATE IN THIS MEETING, OR WHO HAVE A DISABILITY AND WISH TO REQUEST AN ALTERNATIVE FORMAT FOR THE AGENDA, MEETING NOTICE, AGENDA PACKET OR OTHER WRITINGS THAT MAY BE DISTRIBUTED AT THE MEETING, SHOULD CONTACT MAYA PERKINS AT LEAST 72 HOURS BEFORE THE MEETING AT (650) 312-5549 or [NVergara@smcgov.org](mailto:NVergara@smcgov.org). NOTIFICATION IN ADVANCE OF THE MEETING WILL ENABLE THE COUNTY TO MAKE REASONABLE ARRANGEMENTS TO ENSURE ACCESSIBILITY TO THIS MEETING AND THE MATERIALS RELATED TO IT. ATTENDEES TO THIS MEETING ARE REMINDED THAT OTHER ATTENDEES MAY BE SENSITIVE TO VARIOUS CHEMICAL BASED PRODUCTS.

If you wish to speak to the Committee, please fill out a speaker's slip. If you have anything that you wish distributed to the Committee and included in the official record, please hand it to the County Manager who will distribute the information to the committee members.